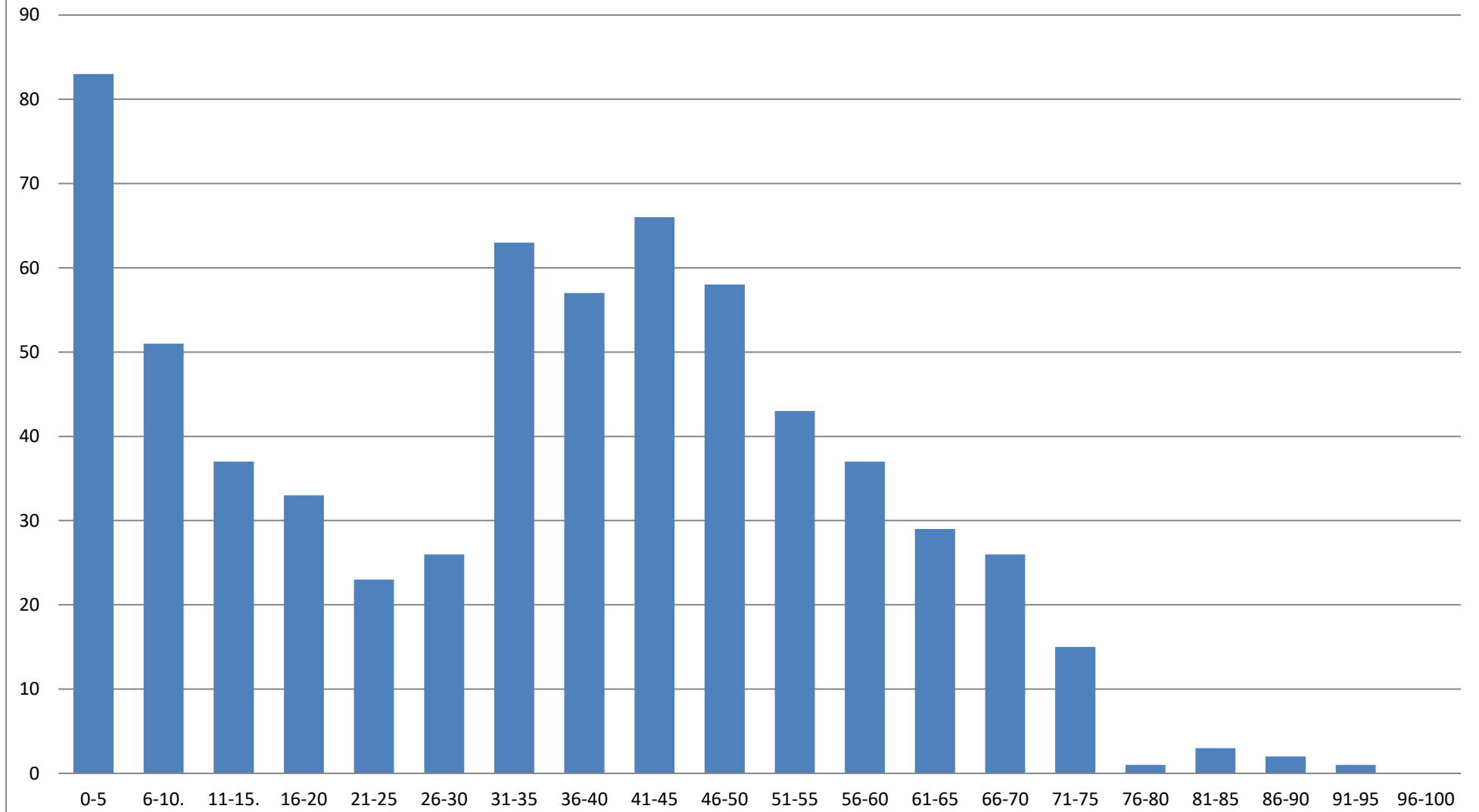


# Upper Rissington Age Distribution

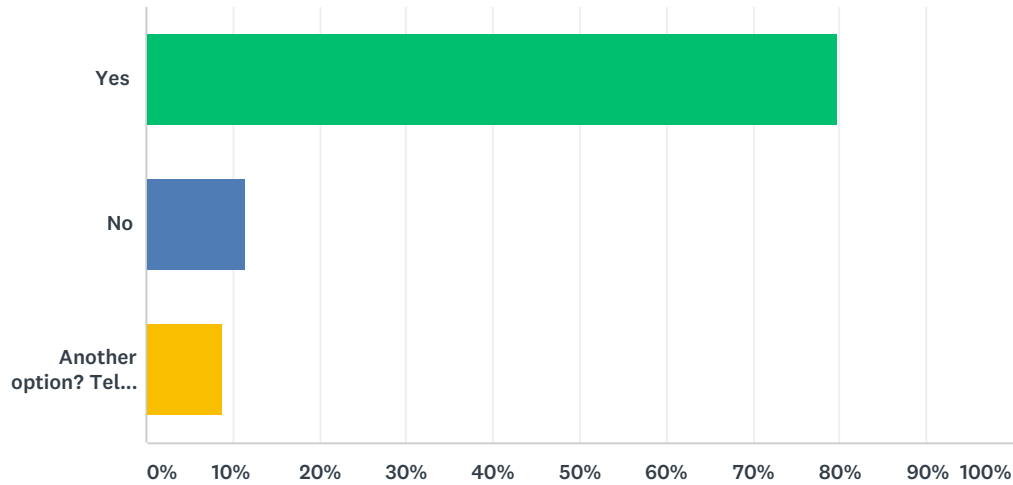
Population numbers



Age

## Q14 Do you agree that speed limits should be 30mph on the Barrington Road and 20mph within the village?

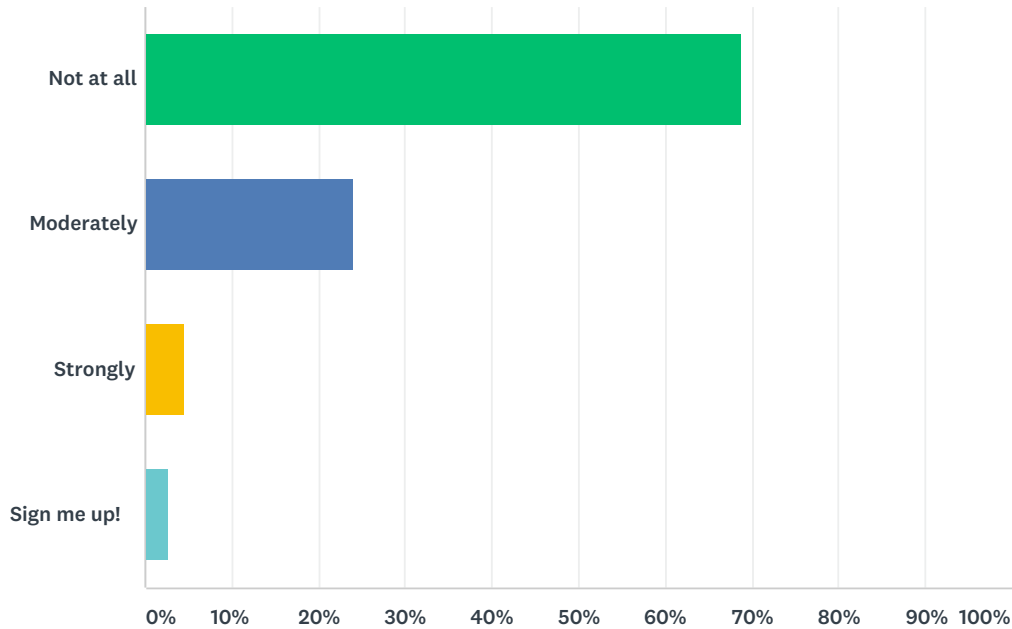
Answered: 285 Skipped: 10



ANSWER CHOICES	RESPONSES	
Yes	79.65%	227
No	11.58%	33
Another option? Tell us what you think.	8.77%	25
<b>TOTAL</b>		<b>285</b>

## Q15 Commercial/business facilities available to rent: How interested are you?

Answered: 288 Skipped: 7



### QUIZ STATISTICS

Percent Correct  
3%

Average Score  
0.4/3.0 (14%)

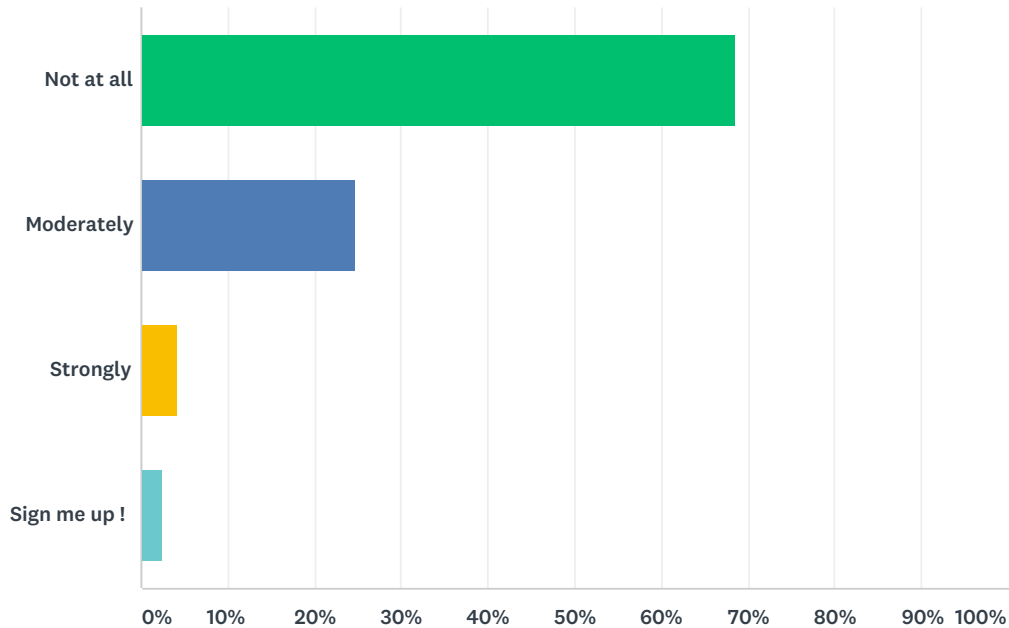
Standard Deviation  
0.71

Difficulty  
3/7

ANSWER CHOICES	SCORE	RESPONSES	
Not at all	0/3	68.75%	198
Moderately	1/3	23.96%	69
Strongly	2/3	4.51%	13
✓ Sign me up!	3/3	2.78%	8
<b>TOTAL</b>			<b>288</b>

## Q16 Would a serviced office/hot-desk facility be useful to you?

Answered: 283 Skipped: 12



### QUIZ STATISTICS

Percent Correct  
2%

Average Score  
0.4/3.0 (14%)

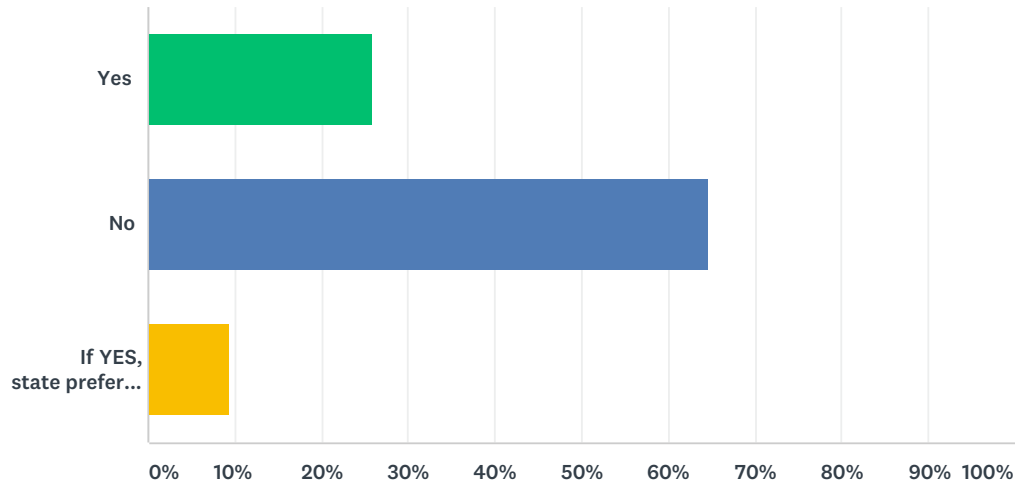
Standard Deviation  
0.69

Difficulty  
2/7

ANSWER CHOICES	SCORE	RESPONSES	
Not at all	0/3	68.55%	194
Moderately	1/3	24.73%	70
Strongly	2/3	4.24%	12
✓ Sign me up !	3/3	2.47%	7
<b>TOTAL</b>			<b>283</b>

## Q17 If you commute, would you prefer there to be more work opportunities in the village?

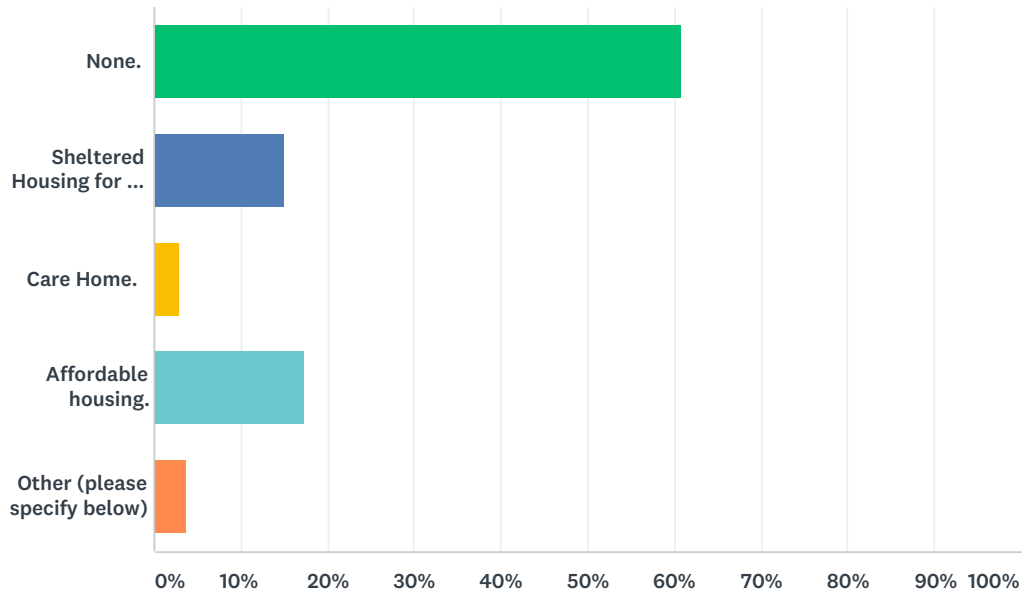
Answered: 243 Skipped: 52



ANSWER CHOICES	RESPONSES	
Yes	25.93%	63
No	64.61%	157
If YES, state preferred type of work.	9.47%	23
TOTAL		243

## Q20 What further type of housing provision would you like to see in the village?

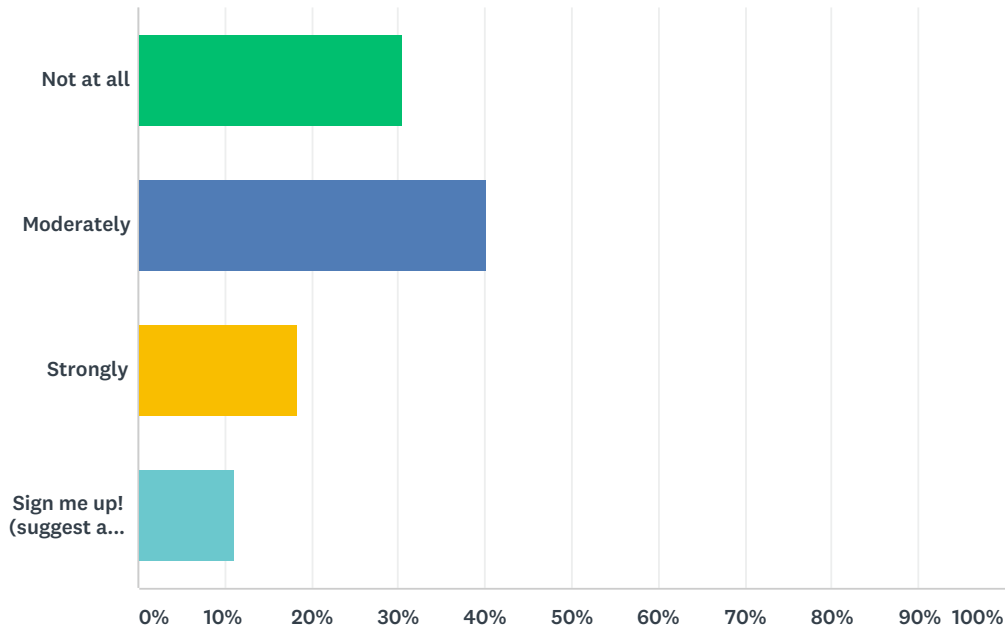
Answered: 271 Skipped: 24



ANSWER CHOICES	RESPONSES	
None.	60.89%	165
Sheltered Housing for the elderly.	15.13%	41
Care Home.	2.95%	8
Affordable housing.	17.34%	47
Other (please specify below)	3.69%	10
<b>TOTAL</b>		<b>271</b>

## Q21 Voluntary roadside litter-picking: How interested are you?

Answered: 272 Skipped: 23



### QUIZ STATISTICS

Percent Correct  
10%

Average Score  
1.1/3.0 (37%)

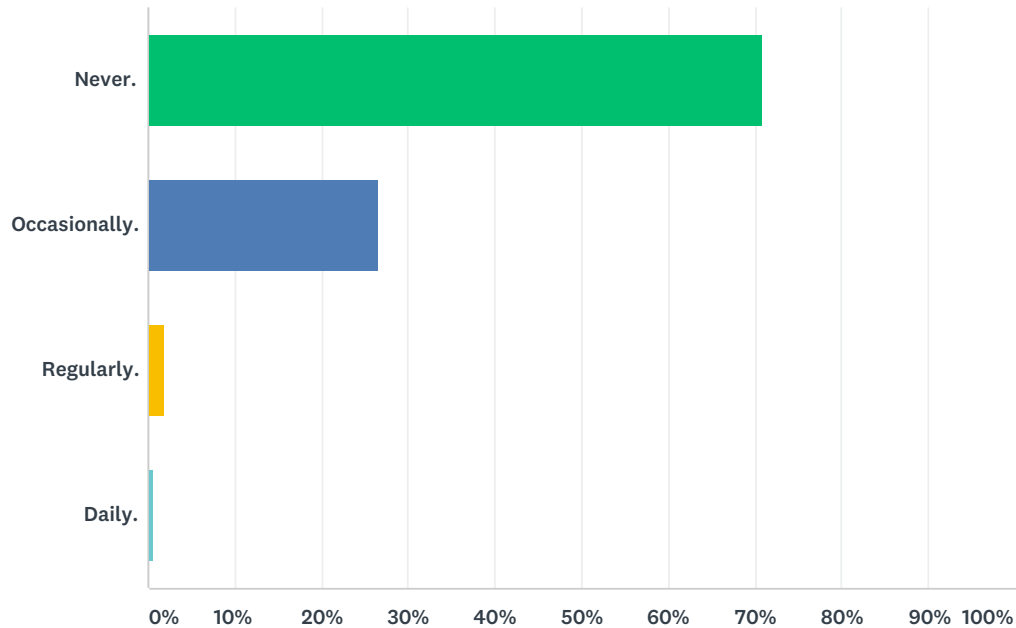
Standard Deviation  
0.96

Difficulty  
5/7

ANSWER CHOICES	SCORE	RESPONSES	
Not at all	0/3	30.51%	83
Moderately	1/3	40.07%	109
Strongly	2/3	18.38%	50
✓ Sign me up! (suggest a frequency below)	3/3	11.03%	30
<b>TOTAL</b>			<b>272</b>

## Q22 How often per month do you use the bus service from the village?

Answered: 279 Skipped: 16



### QUIZ STATISTICS

Percent Correct  
1%

Average Score  
0.4/5.0 (7%)

Standard Deviation  
0.69

Difficulty  
1/7

ANSWER CHOICES	SCORE	RESPONSES	
Never.	0/5	70.97%	198
Occasionally.	1/5	26.52%	74
Regularly.	3/5	1.79%	5
✓ Daily.	5/5	0.72%	2
<b>TOTAL</b>			<b>279</b>